

## Program Services

- Image Processing and Spatial Analysis
- Geo- and Ortho-Correction of Data
- Digital Elevation Model (DEM) Extraction and Processing
- 3-D Image Profiling and Visualization
- Cartographic Quality Mapping
- Mosaicking of Imagery
- Digitizing and Data Conversion
- Database Development
- Slope, Aspect, Shaded Relief and Contour Generation
- Viewshed and Line-of-Site Analysis
- Ecological Modeling
- Geologic, Soils, Vegetation, and Hydrologic Mapping

## Contact

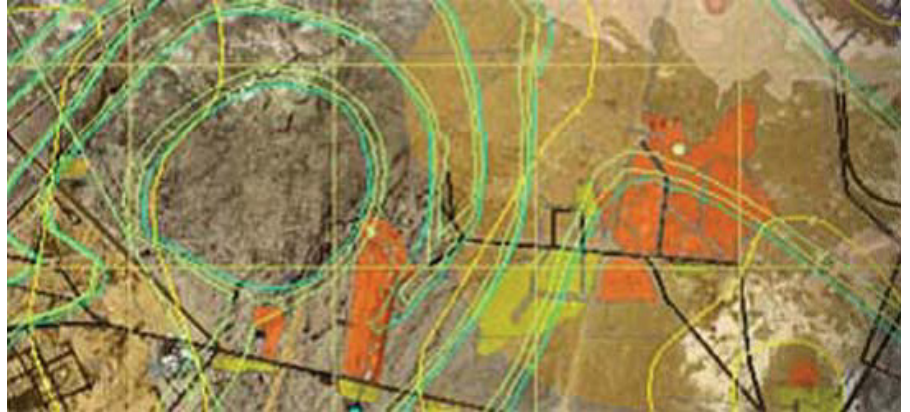
### Dan Zelko

GIS Manager

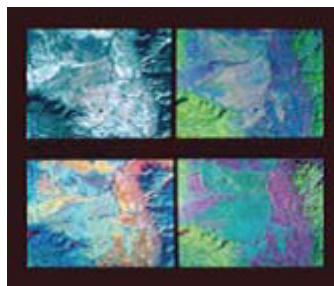
Office: 760-446-6400

Direct: 760-574-2693

[dzelko@epsilonsystems.com](mailto:dzelko@epsilonsystems.com)



At Epsilon Systems, we believe that at the heart of environmental problem-solving and solid decision making is accurate geographic information. This notion has elevated the company's reputation and its ability to help people make better decisions in industries such as oil/gas/mineral exploration, natural resource management, urban and regional planning, environmental monitoring, forest management, engineering, telecommunications, utilities, and transportation.



From simple thematic mapping to advanced remote sensing and everything in between – Epsilon Systems' fully integrated approach to spatial information management enables us to provide accurate, timely, and cost-effective solutions for all your geospatial information needs.

