



# 24" High Definition Panoramic Display

## Key Features

- 24.0" Color Active Matrix Liquid Crystal Display
- High Resolution 1920 x 1200 (WUXGA)
- Tested/Passed EMI Testing IAW MIL-STD-461F, Vibration Testing, MIL-STD-167-1 and Shock Testing IAW, MIL-S-901D
- VGA, DVI-D, Composite Video
- Bonded Anti-Reflective Protective Window
- Wide Viewing Angle  $\pm 89$  Degrees
- 10U Rack Mount



## Model: REP-24HDW-10U115TV

The REP-24HDW-10U115TV is Epsilon Systems' 24" display offering significant benefits with respect to dimensions, ruggedization and video quality. The 24HDW combines unmatched mechanical integrity with exceptionally low weight to provide a unique, rugged display solution, especially for applications where space and weight are critical.

The REP-24HDW-10U115TV features a first-class 24" Active Matrix Liquid Crystal Display 1920 x 1200 (WUXGA) offering excellent performance in terms of brightness, crispness, contrast and viewing angle. The bezel and mounting can be customized to address virtually any mounting need in any application. Additionally, the REP-24HDW-10U115TV combines this high level of performance and versatility with a very competitive price/performance value.

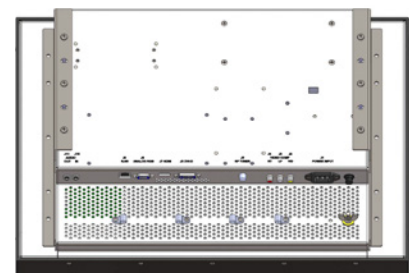
Epsilon Systems' displays have been designed and qualified for application in the most hostile environments. Epsilon Systems' rugged displays are well suited for specific naval combat, army and airborne applications.



BACK



SIDE



BACK ISOMETRIC

# 24" High Definition Panoramic Display

## Contact

### Ronald Klein

Vice President of Information Technology  
 Vice President & General Manager  
 Advanced Products Group West

Direct: 858-740-0572  
[FlatPanels@epsilonsystems.com](mailto:FlatPanels@epsilonsystems.com)

5482 Complex Street, Suite 109  
 San Diego, CA 92123  
 619-702-1700

Headquarters and Corporate Office  
 9444 Balboa Avenue, Suite 100  
 San Diego, CA 92123

## TECHNICAL SPECIFICATIONS

Active Display Area	24" TFT Active Matrix LCD 518.4 x 324.0 mm (20.41" x 12.96")
Display Resolution	1920 x 1200 (WUXGA)
Backlighting	LED
Input Interface	VGA (HD15) DVI-D, Composite Video
Brightness	750 cd/m2 (Minimum)
Viewing Angle	± 89 Degrees All Directions
Contrast Ratio	1000:1
Display Colors	1.07B Colors
Power Supply	115 VAC; 60 Watts
Model Number	REP-24HDW-10U115TV
User Controls	Volume Up/Down, Brightness/Dim, Power, Menu

## DESIGNED TO MEET RIGOROUS MILITARY SPECIFICATIONS

MIL-STD-167-1, Type 1	Vibration
MIL-STD-810	Environmental
MIL-STD-901D Grade A, Class I, Type A	Shock
MIL-STD-461F	EMI/EMC

## ENVIRONMENTAL SPECIFICATIONS

IP Rating	IP65 Drip Proof
Operating Temperature	0°C to 40°C
Storage Temperature	-20°C to +50°C
Humidity	5 to 95% @ RH Non-condensing

## DIMENSIONS INCHES MILLIMETERS

	INCHES	MILLIMETERS
Height	15.70"	398.7 mm
Width	21.95"	557.5 mm
Depth	4.51"	114.5 mm
Weight	25 lbs	11.3 kg

